

GSR Architectural

DESIGN

FABRICATE

INSTALL

Solving problems, bringing geometry to life.

URBAN DESIGN || BUILD SPECIALISTS

OUR PROCESS

INTRODUCING YOUR PROJECT

Provide Options
Design Expertise
Solving Problems



JOINING YOUR PROJECT TEAM

Proactive • Responsive
Collaborative



EXECUTING YOUR PROJECT

Communication
Coordination
Attention to Detail



COMPLETING YOUR PROJECT

On Time • Within Budget
Follow-up

We specialize in the *design, fabrication and installation* of specialty metal and glass commercial applications.

Our work starts before the project is awarded. We **initiate design ideas**, provide multiple price points in our quotes and **communicate clearly and promptly**. **We understand that good planning matters** and we work with you every step of the way. We oversee installation and final inspection—offering you peace-of-mind—allowing you to focus on the project tasks where you're most needed.

FROM START TO FINISH WE PARTNER WITH YOU

SPECIALITIES INCLUDE:

- Aluminum Pergolas
- Integrated LED Lighting
- Wood Look Aluminum
- Screening Systems
- Vegetative Screens
- Railing Systems
- Fencing
- Custom Metal Fabrication

...anything you can dream!



Robbie Harnois

PRESIDENT

E RHARNOIS@GSRARCH.COM

P 952-220-2632



Greg Fast

PROJECT MANAGEMENT

E GFAST@GSRARCH.COM

P 952-220-2680

Minneapolis • Nashville • Charleston

Get to know us → GSRARCH.COM

Cherrywood Pointe

- Contemporary Aluminum Pergolas
- Aluminum + Cumaru Privacy Fence
- Vertical Picket Pool Fence



▷ MINNEAPOLIS • CHICAGO • NASHVILLE • CHARLESTON

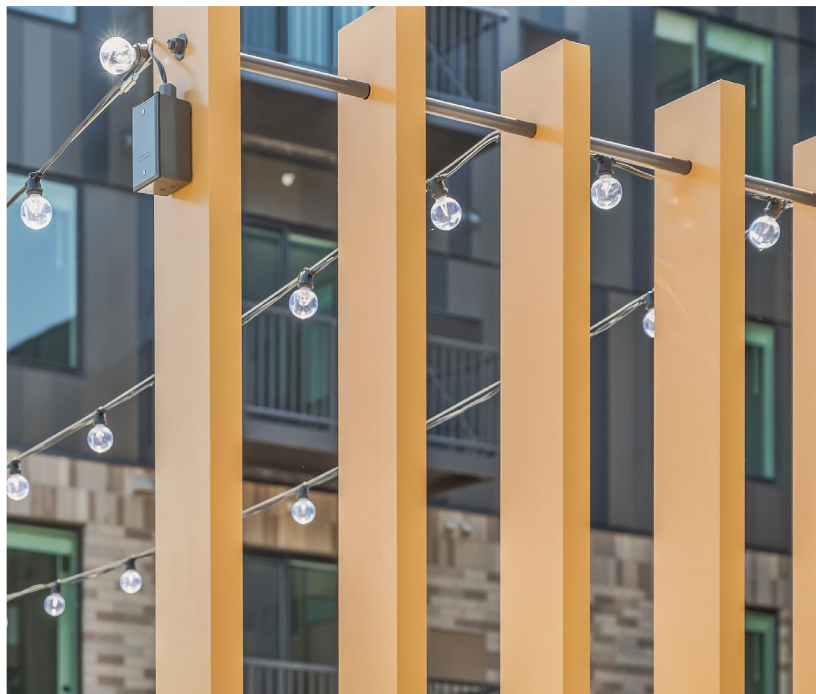
952-220-2632 / info@gsrarch.com / gsrarch.com

A division of GSR Group, Inc. / Content ©2022

GSR Architectural

The Fredrik

- Aluminum Batten Entry Trellis
- Aluminum Batten Festoon Lighting
- Aluminum Pergola



▷ MINNEAPOLIS • CHICAGO • NASHVILLE • CHARLESTON

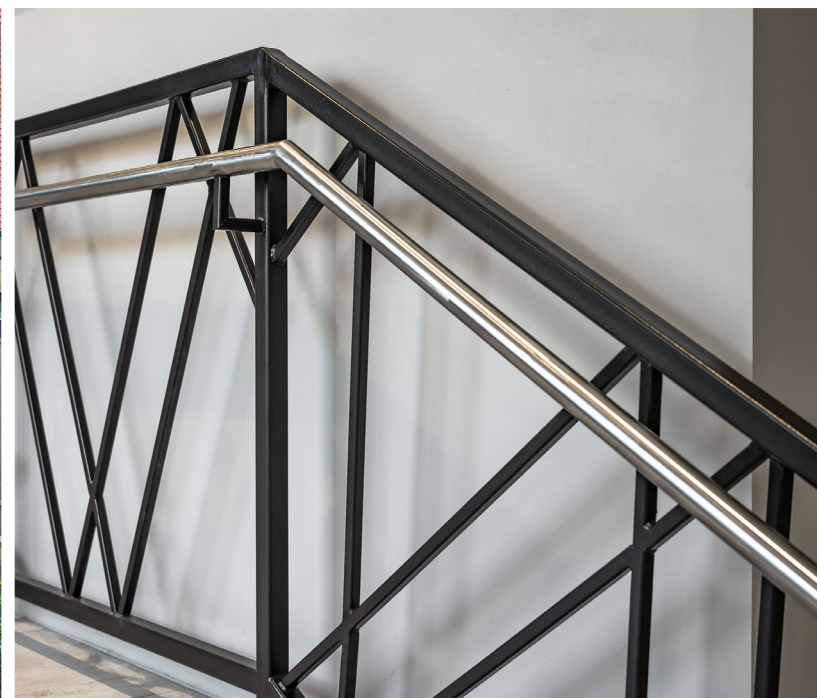
952-220-2632 / info@gsrarch.com / gsrarch.com

A division of GSR Group, Inc. / Content ©2022

GSR Architectural

The Gatsby

- Interior Art Deco Railing
- Tension Fabric Sunshades
- Custom Perforated Screen wall



▷ MINNEAPOLIS • CHICAGO • NASHVILLE • CHARLESTON

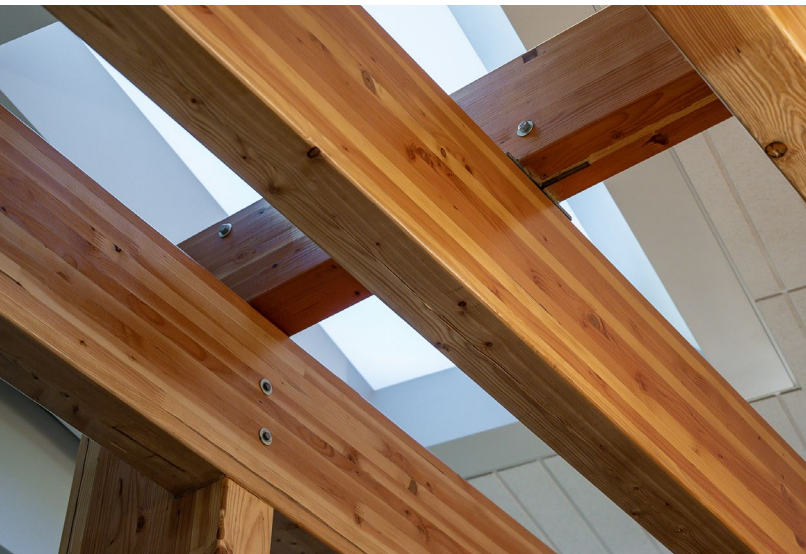
952-220-2632 / info@gsrarch.com / gsrarch.com

A division of GSR Group, Inc. / Content ©2022

GSR Architectural

St Paul Port Authority

- Glulam Beam / Glass Curtain Wall
- Interior Pergola
- Glass Floating Staircase



▷ MINNEAPOLIS • CHICAGO • NASHVILLE • CHARLESTON

952-220-2632 / info@gsrarch.com / gsrarch.com

A division of GSR Group, Inc. / Content ©2022

GSR Architectural

Aspire at City Place

- Contemporary I-Beam Construction
- Vertical Privacy Slat Walls
- Glass Windscreen + Entry Doors



▷ MINNEAPOLIS • CHICAGO • NASHVILLE • CHARLESTON

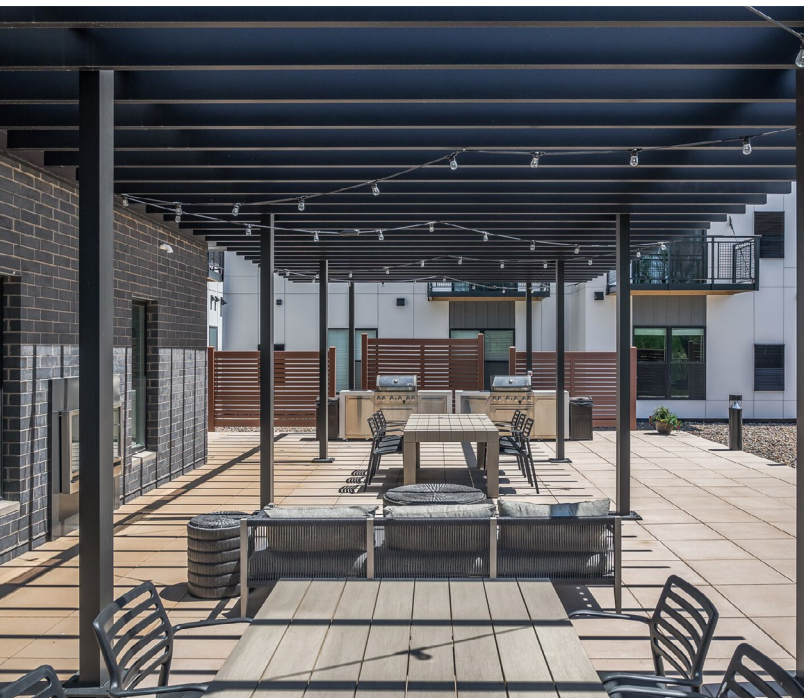
952-220-2632 / info@gsrarch.com / gsrarch.com

A division of GSR Group, Inc. / Content ©2022

GSR Architectural

Caliper

- Contemporary Architectural Pergolas
- Overhead Mounted Sun Slats
- Woodlook Aluminum Privacy Screens



▷ MINNEAPOLIS • CHICAGO • NASHVILLE • CHARLESTON

952-220-2632 / info@gsrarch.com / gsrarch.com

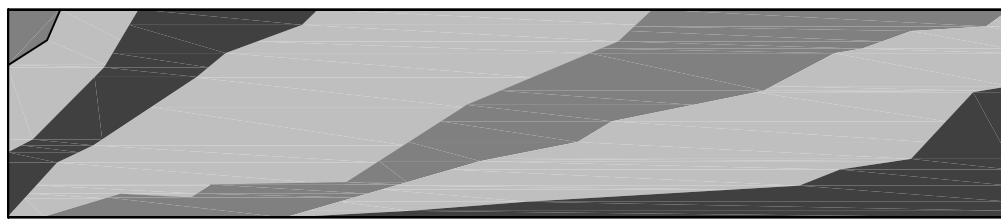
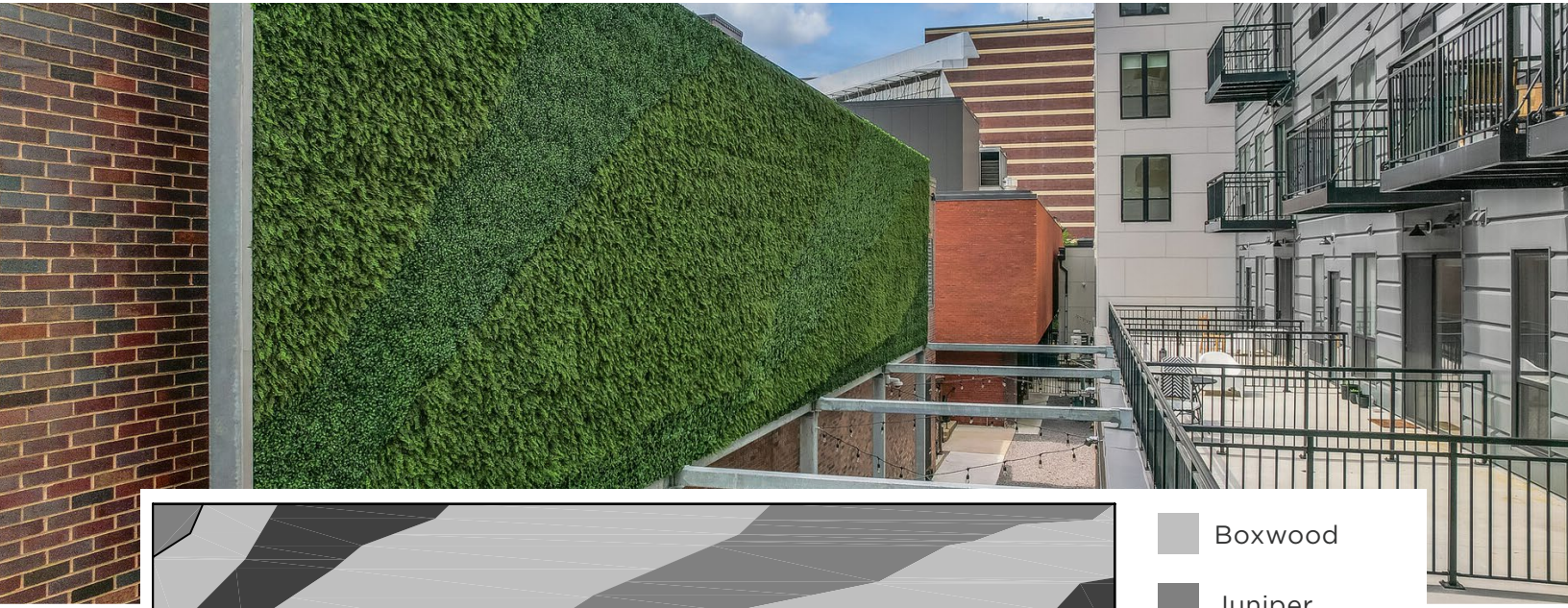
A division of GSR Group, Inc. / Content ©2022

GSR Architectural

The Abbey

PERMALEAF®

- 100% Maintenance Free
- No Watering or Pruning
- UV Stable + Lightfast



- Boxwood
- Juniper
- English Ivy



▷ MINNEAPOLIS • CHICAGO • NASHVILLE • CHARLESTON

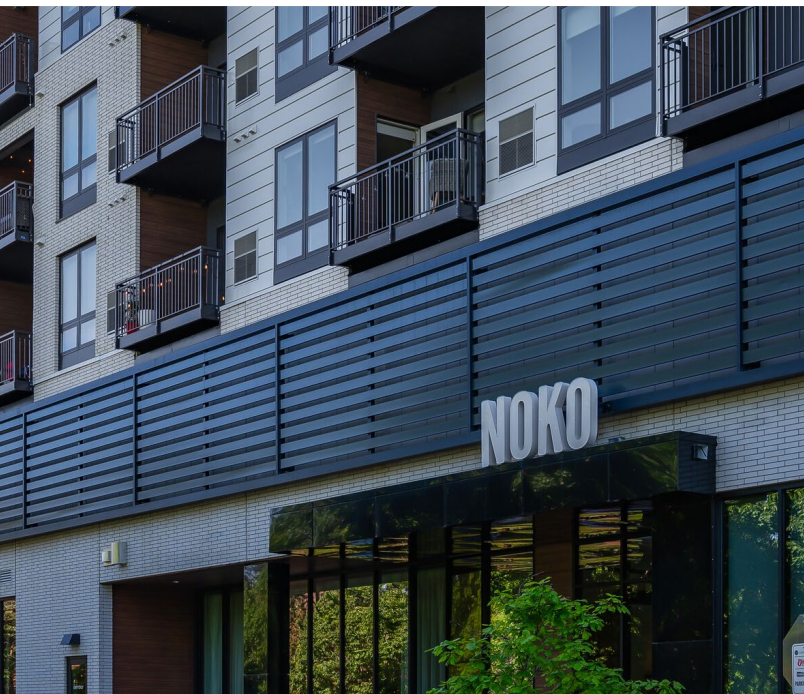
952-220-2632 / info@gsrarch.com / gsrarch.com

A division of GSR Group, Inc. / Content ©2022

GSR Architectural

NOKO Apartments

- 8' Tall Continuous Aluminum Sign Band
- Woodlook Aluminum Infill Battens
- Sunbrella Fabric / Aluminum Awnings



▷ MINNEAPOLIS • CHICAGO • NASHVILLE • CHARLESTON

952-220-2632 / info@gsrarch.com / gsrarch.com

A division of GSR Group, Inc. / Content ©2022

GSR Architectural

Frogtown Crossroads

- Multi-level Trellis + Canopy System
- Architectural Brushed Aluminum Finish
- Weathering Steel Planter Boxes



▷ MINNEAPOLIS • CHICAGO • NASHVILLE • CHARLESTON

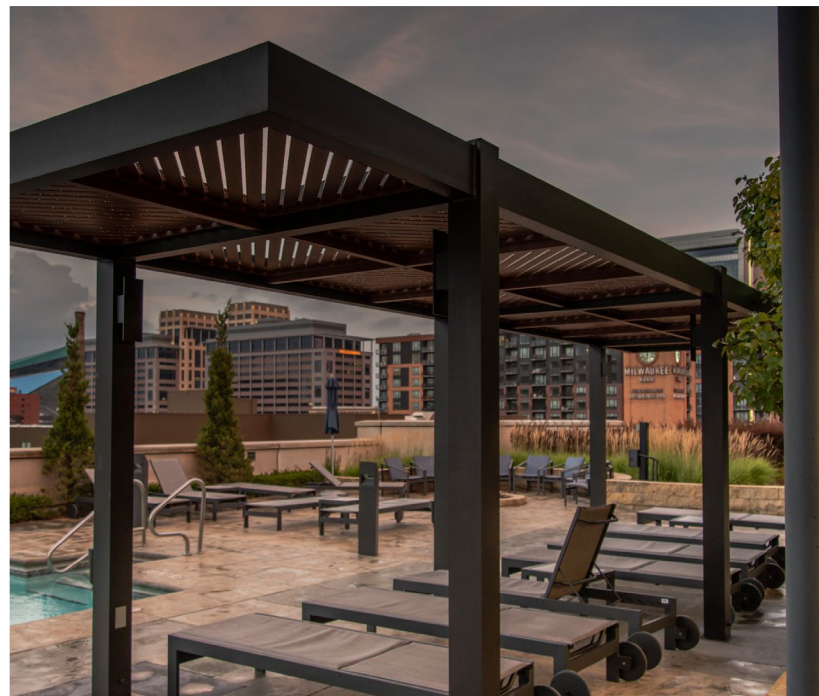
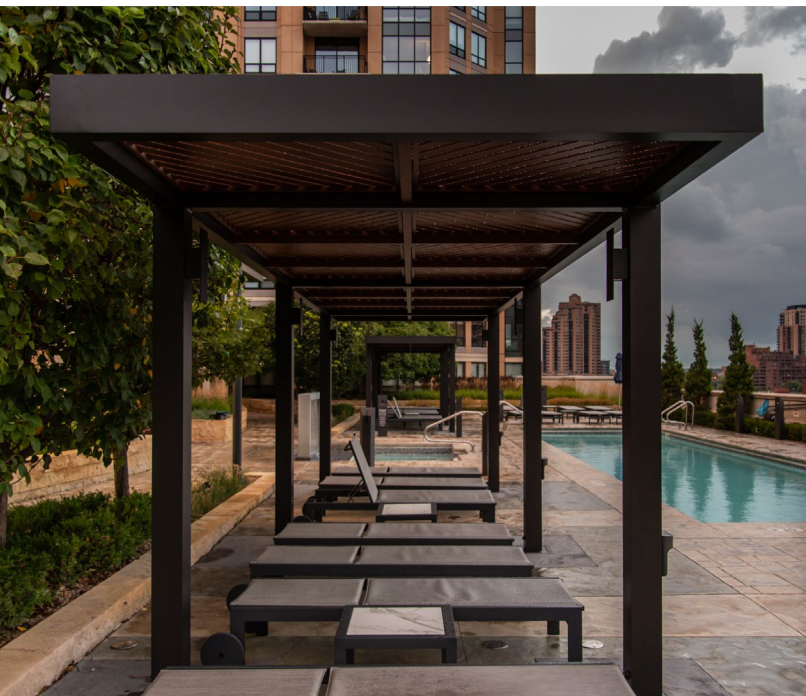
952-220-2632 / info@gsrarch.com / gsrarch.com

A division of GSR Group, Inc. / Content ©2022

GSR Architectural

The Carlyle

- IPE Decorated Aluminum Sun Slats
- LED Integrated Illumination



▷ **LOCATION:** MINNEAPOLIS, MN / **SPECIALTY:** PERGOLAS + ILLUMINATED

952-220-2632 / info@gsrarch.com / gsrarch.com

A division of GSR Group, Inc. / Content ©2021

GSR Architectural

Corporate Environmental Work Space

- Aluminum Pergolas with Integrated LED Lighting
- Stainless Steel Cable Rail with Integrated LED Lighting



▷ **LOCATION:** MINNEAPOLIS • NASHVILLE • CHARLESTON

▷ **SPECIALTY:** ILLUMINATION + PERGOLAS + RAILINGS

952-220-2632 / info@gsrarch.com / gsrarch.com

A division of GSR Group, Inc. / Content ©2021

GSR Architectural

Pentagon Village Parking Garage

- LED Illuminated Light Spires
- Matrix Perforated Accent Panels
- Translucent Polycarbonate Entrance Panels
- Vegetative Screen Panels



▷ **LOCATION:** EDINA, MN / **SPECIALTY:** SCREENING + ILLUMINATED

952-220-2632 / info@gsrarch.com / gsrarch.com

A division of GSR Group, Inc. / Content ©2021

GSR Architectural

HERE MN

- Cantilevered Aluminum Pergola
- Stainless Steel Woven Wire Mesh Fence



▷ **LOCATION:** MINNEAPOLIS, MN / **SPECIALTY:** PERGOLAS + FENCING

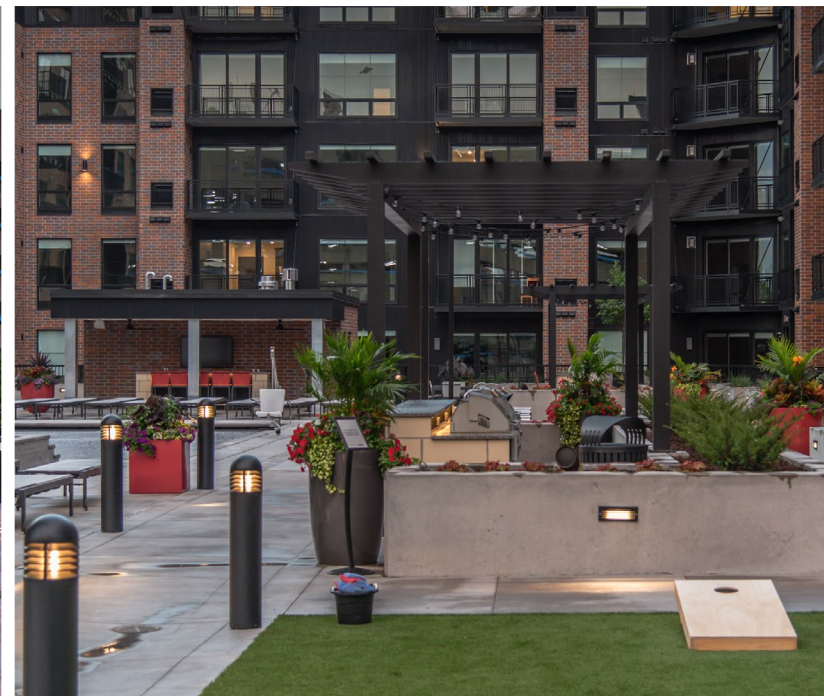
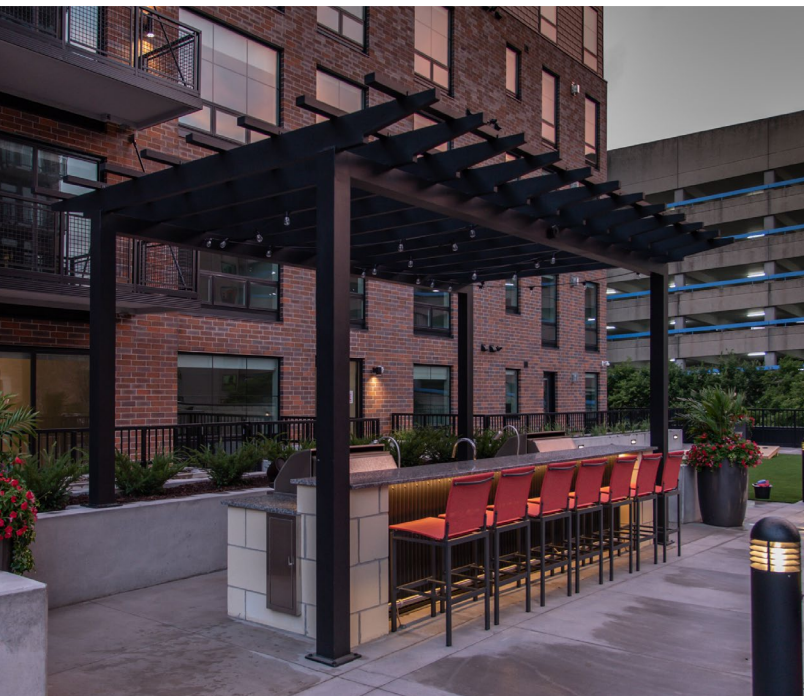
952-220-2632 / info@gsrarch.com / gsrarch.com

A division of GSR Group, Inc. / Content ©2021

GSR Architectural

The Expo

- Cross-Hatched Aluminum Sun Slats
- Integrated LED Illumination



▷ **LOCATION:** MINNEAPOLIS, MN / **SPECIALTY:** PERGOLAS + ILLUMINATED

952-220-2632 / info@gsrarch.com / gsrarch.com

A division of GSR Group, Inc. / Content ©2021

GSR Architectural

The Lodge

- Engineered Aluminum Pergola Structures
- 4" x 4" Aluminum Tube Cluster Columns
- 2" x 8" Aluminum Beams with 2" x 6" Aluminum Sunslats



▷ **LOCATION:** PLYMOUTH, MN / **SPECIALTY:** RAILING SYSTEM

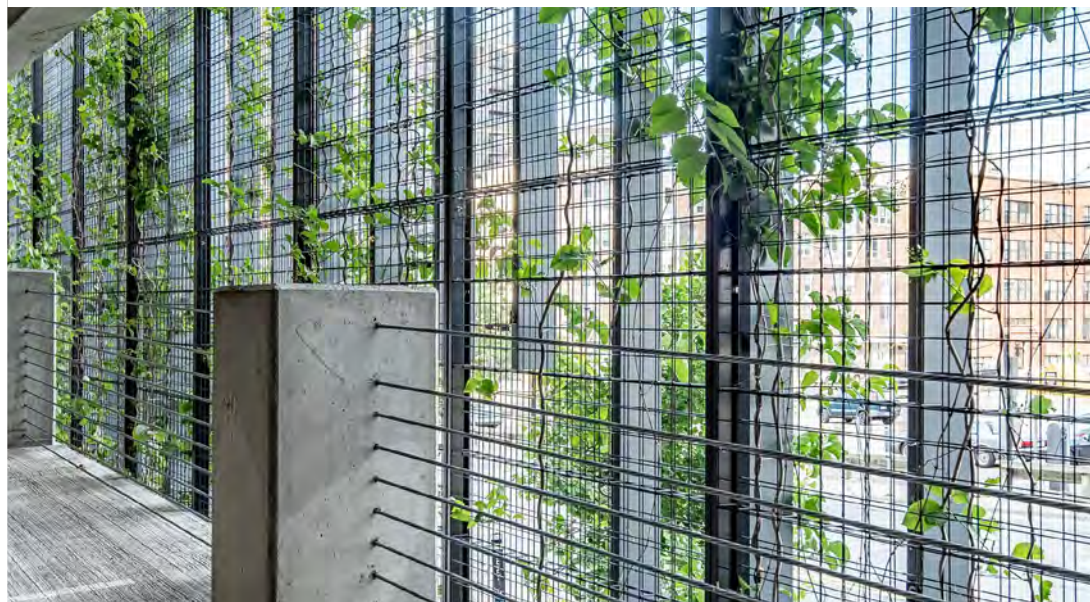
952-220-2632 / info@gsrarch.com / gsrarch.com

A division of GSR Group, Inc. / Content ©2019

GSR Architectural

Fleet Farm Garage

- 10 Gauge Welded Wire Vegetative Screen
- 5' x 20' Modular Panels
- High Performance Powder Coat Paint Finish



▷ **LOCATION:** MINNEAPOLIS, MN / **SPECIALTY:** VEGETATIVE SCREENING

952-220-2632 / info@gsrarch.com / gsrarch.com

A division of GSR Group, Inc. / Content ©2019

GSR Architectural

Green on 4th

- 5/8" Tempered Plate Glass with Stainless Steel Standoffs
- Aluminum Tube Trellis Beams + Columns
- Glu-Lam Horizontal Support Beam



▷ **LOCATION:** MINNEAPOLIS, MN / **SPECIALTY:** CUSTOM METAL FABRICATION

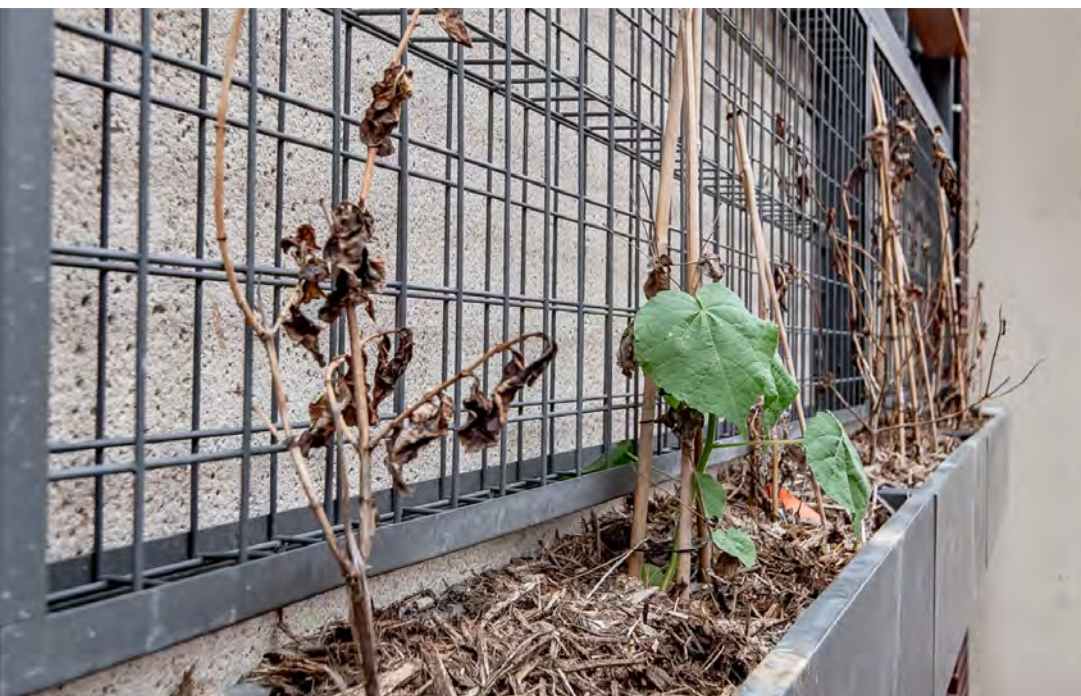
952-220-2632 / info@gsrarch.com / gsrarch.com

A division of GSR Group, Inc. / Content ©2019

GSR Architectural

Edina North Ramp

- 10 Gauge Welded Wire Vegetative Screen
- 3" x 1" Steel Channel Continuous Frame
- High Performance Powder Coat Paint Finish



▷ **LOCATION:** EDINA, MN / **SPECIALTY:** VEGETATIVE SCREENING

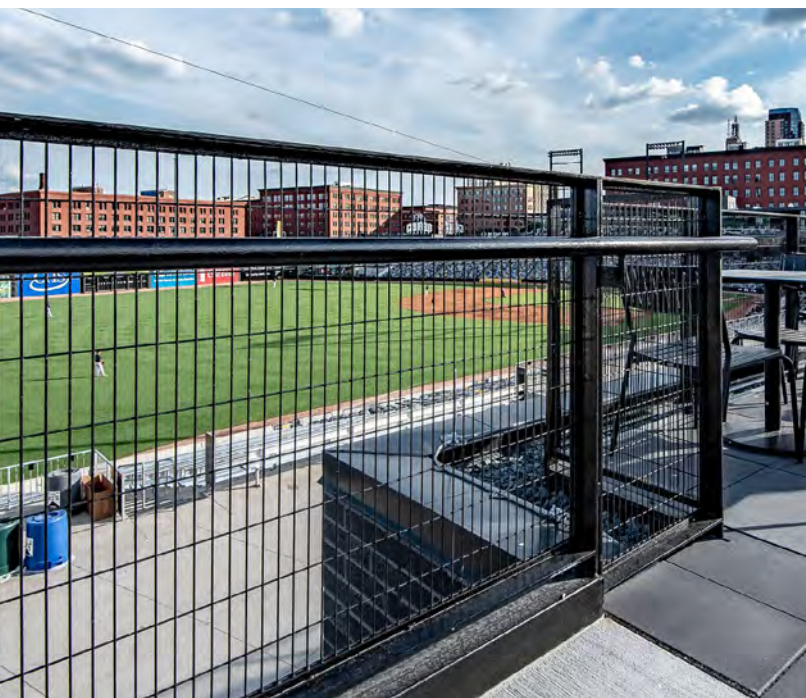
952-220-2632 / info@gsrarch.com / gsrarch.com

A division of GSR Group, Inc. / Content ©2019

GSR Architectural

CHS Field “St. Paul Saints”

- 1" x 4" Steel Mesh Infill Panels
- Black Performance Coat Finish
- ADA Assist Handrails
- 42" High Observation Rail
- 120" High Perimeter Fencing



▷ **LOCATION:** SAINT PAUL, MN / **SPECIALTY:** RAILING SYSTEM

952-220-2632 / info@gsrarch.com / gsrarch.com

A division of GSR Group, Inc. / Content ©2019

GSR Architectural

The Link

GSR Architectural provided multiple options to the GC from louvers to perforated metal for different screening needs on this upscale high-rise apartment.

When overall project budget became an issue, GSR offered a cost-effective expanded aluminum option that works perfectly for all the project screening needs.



▷ **LOCATION:** MINNEAPOLIS, MN / **SPECIALTY:** SCREENING

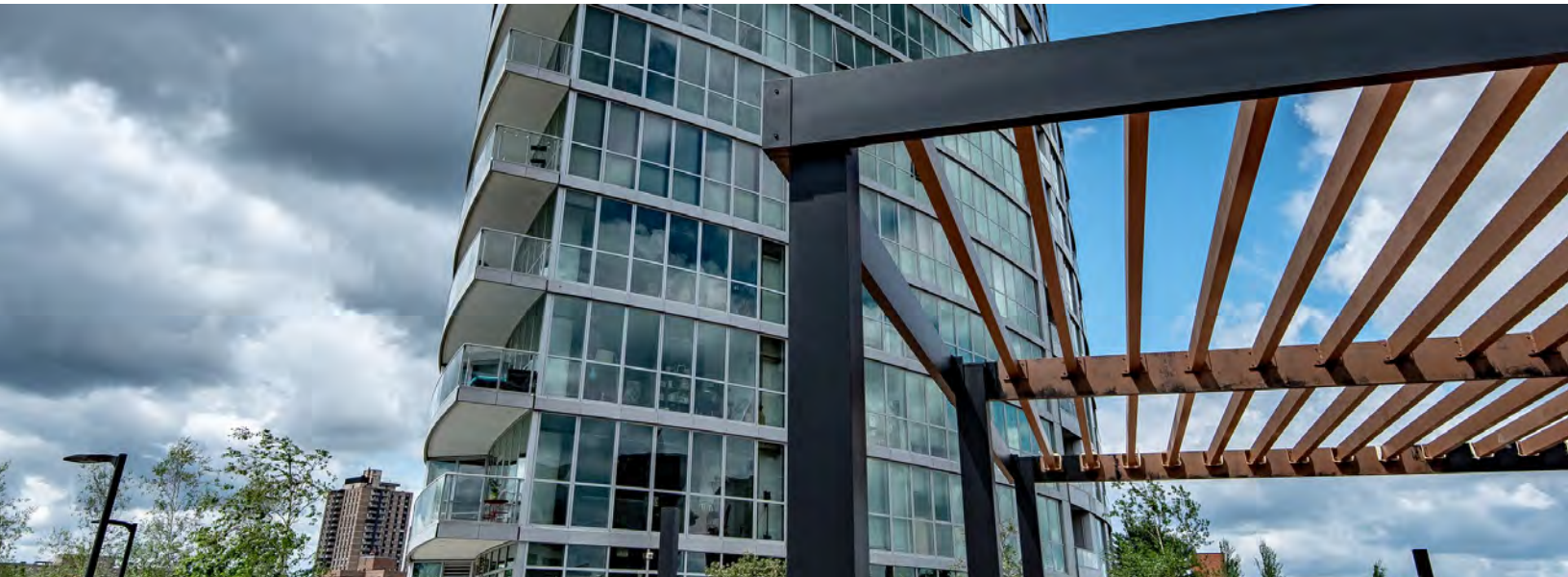
952-220-2632 / info@gsrarch.com / gsrarch.com

A division of GSR Group, Inc. / Content ©2019

GSR Architectural

Loring Park Apartments

A refurbished amenity deck was in order for this luxury high rise apartment complex. GSR Architectural designed and installed the contemporary pergola along with light columns and the bar and grille station metal cladding.



▷ **LOCATION:** MINNEAPOLIS, MN / **SPECIALTY:** PERGOLA

952-220-2632 / info@gsrarch.com / gsrarch.com

A division of GSR Group, Inc. / Content ©2019

GSR Architectural

MoZaic

- 17' tall vegetative screen panels span from parking deck to parking deck
- Mounting brackets designed to allow panels to “flow” with the flexing of the parking decks
- Vegetation is colorful in the springtime through fall, both inside and out



▷ **LOCATION:** MINNEAPOLIS, MN / **SPECIALTY:** VEGETATIVE SCREENING

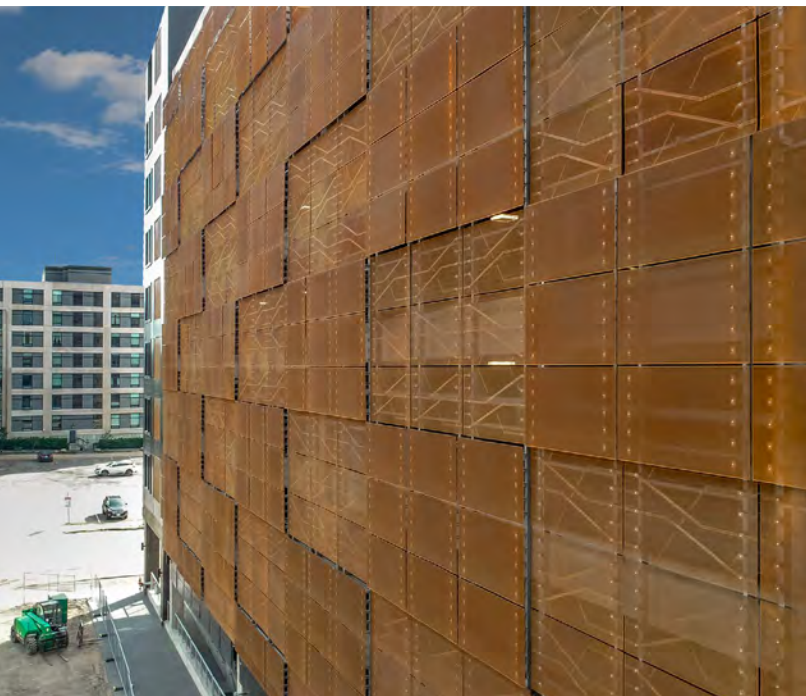
952-220-2632 / info@gsrarch.com / gsrarch.com

A division of GSR Group, Inc. / Content ©2019

GSR Architectural

The Nordic

- Custom random Perforated Pattern
- Multiple Plane Textured Installation
- Engineered steel support system



▷ **LOCATION:** MINNEAPOLIS, MN / **SPECIALTY:** SCREENING

952-220-2632 / info@gsrarch.com / gsrarch.com

A division of GSR Group, Inc. / Content ©2019

GSR Architectural

Ridgedale Shoppes

- Engineered Aluminum Sign Band Structure
- 2" x 10" Aluminum Channel Outriggers
- 2" x 12" Aluminum Channel Facia



▷ **LOCATION:** MINNETONKA, MN / **SPECIALTY:** CUSTOM METAL FABRICATION

952-220-2632 / info@gsrarch.com / gsrarch.com

A division of GSR Group, Inc. / Content ©2019

GSR Architectural

MN Veterans Home

Originally, the architect designed a wood pergola but due to the proximity to the new building, the Fire Marshall would not allow a wood structure. The GC came to GSR Architectural six weeks prior to the opening on Memorial Day, GSR designed, fabricated and installed the pergola from aluminum in five weeks, within budget, to allow the courtyard celebration to continue as planned.



▷ **LOCATION:** MINNEAPOLIS, MN / **SPECIALTY:** PERGOLAS

952-220-2632 / info@gsrarch.com / gsrarch.com

A division of GSR Group, Inc. / Content ©2019

GSR Architectural

Vintage on Selby

Unique architectural screening using a pixelated perforated pattern and fabricated aluminum tube ladders to infill large openings on the aesthetically pleasing urban parking garage.



▷ **LOCATION:** SAINT PAUL, MN / **SPECIALTY:** VEGETATIVE SCREENING

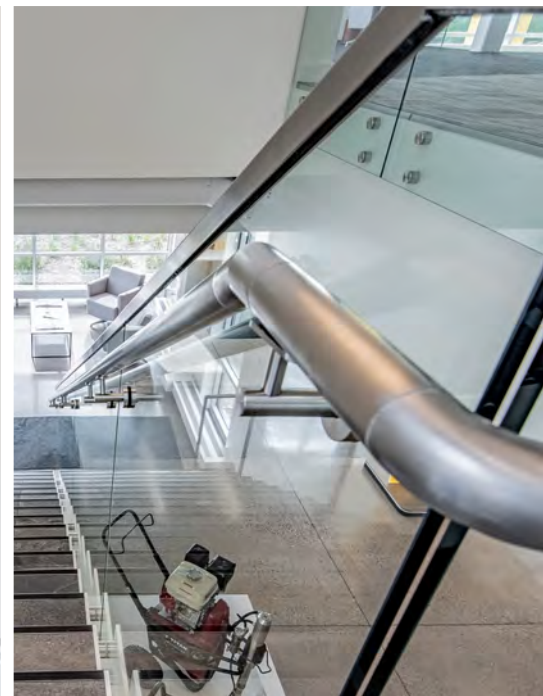
952-220-2632 / info@gsrarch.com / gsrarch.com

A division of GSR Group, Inc. / Content ©2019

GSR Architectural

Wagner Spraytech

- Brushed 316 stainless steel Handrails + Components
- 5/8" Thick Tempered Plate Glass
- Fully Engineered System



▷ **LOCATION:** PLYMOUTH, MN / **SPECIALTY:** RAILING SYSTEM

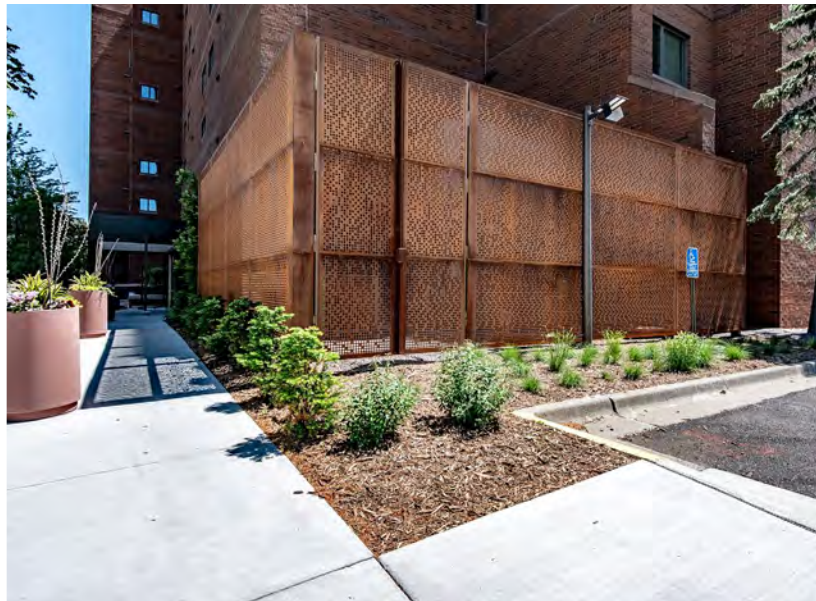
952-220-2632 / info@gsrarch.com / gsrarch.com

A division of GSR Group, Inc. / Content ©2019

GSR Architectural

Winslow House

- Random Perforated Weathering Steel Panels
- Engineered Galvanized Steel Support Structure
- Below Grade Anchor Bolt Frost Footings



▷ **LOCATION:** MINNEAPOLIS, MN / **SPECIALTY:** SCREENING

952-220-2632 / info@gsrarch.com / gsrarch.com

A division of GSR Group, Inc. / Content ©2019

GSR Architectural